

**QUICKSILVER®**

**QUICKSILVER INFLATABLES 2001**  
GIVE YOURSELF SOME AIR.



**For over 60 years Mercury Marine has maintained the standard of excellence in marine products.**

As the second-largest inflatable boat company in the world, Quicksilver Inflatables continues this commitment to quality by building durability, value and the Mercury reputation into every model.

Quicksilver Inflatables feature reinforced-seam construction, heavy-duty (1100 decitex) PVC fabric with a tight-weave nonstretch polyester core and stainless steel hardware. Whatever your boating needs, Quicksilver Inflatables offer lightweight portability, reassuring stability, quick setup and easy operation in a full range of styles and sizes.

So whether you're exploring a new coastline, diving in the Caribbean or just need a dinghy—give yourself some air with Quicksilver Inflatables.

## **THE RHINO™ SERIES** **A SPECIES OF BOAT BUILT FOR ADVENTURE.**

When you've got a thick skin and a tough underbelly, beach landings are second nature. The **Rhino Rider™** and the **Rhino RIB II** both feature a rotationally molded polyethylene hull—the same rugged material found in whitewater kayaks. This tough hull can withstand the scrapes and impacts of rocky beaches, sandbars and just about any other environment you happen to venture into.

Like their namesake, these Rhino models, with their semi-“V” hulls, easily charge through water. The oversized heavy-duty tube provides great buoyancy and a stable ride.

So for fun and adventure, choose the Rhino Series — the toughest air on the water.

**THICK-SKINNED AND READY TO CHARGE.**



The **Rhino RIB II** is the perfect tender.  
Featuring a detachable tube for easy  
repairs or replacement.



Looking for a RIB?  
Ask your dealer about  
Valiant RIBs.  
Now part of the  
Mercury Marine Family.



The **Rhino Rider**, with its center-console  
seating and integral inflatable collar,  
combines the sportiness of a personal  
watercraft with the stability of an inflatable.



# 10

## TOP TEN REASONS

### TO BUY A QUICKSILVER INFLATABLE BOAT.

#### 1 STRONGER FABRIC

The fabric used to build Quicksilver's foldable boats is up to 25% stronger than that used by some other manufacturers. It makes your Quicksilver tougher and longer lasting.



pad for the engine, stainless steel towing eyes, bow handle and a storage bag (except for Rhinos).



#### 2 STRONGER RIBS

The special Rhino Rider and Rhino II have virtually indestructible polyethylene hulls.



#### 4 INFLATABLE KEEL

All Quicksilver AirDeck and Sport models have inflatable keels under the floor for better performance than competitors' flat-bottom boats.



#### 3 ACCESSORIES

All Quicksilver inflatables come standard with the accessories you need to get started on the water. You receive an inflation pump, rowing seat, repair kit, oars or paddles, aluminium or stainless steel reinforcing

#### 5 QUALITY ASSURANCE

Quicksilver foldable boats are built in a factory with ISO 9002 certification. This is your assurance of a quality product built consistently to exacting standards.

PORTABLE, AFFORDABLE FUN.



**6 FOLD-DOWN ROW LOCKS**

The row locks allow oars to be stored on the outside of the tubes for a lower profile, leaving more open room on top of the tube.

**7 PROVEN DESIGN**

Quicksilver boats designs have evolved down the years to today's proven range. They have accumulated over 11 million hours of experience on the water.



**8 T-TYPE STORAGE BAG**

When it is time to put your boat away you will find that Quicksilver's T-Type storage bag is much easier to use than a zipper bag.



**9 WIDER CHOICE**

Whether you are looking for a lightweight tender or offshore thrills, Quicksilver has a boat for you. From Roll-ups to AirDecks to Sport models to RIBs-Quicksilver will have what you need.



**10 FIVE-YEAR WARRANTY**

Quicksilver backs all of its boats with a 5-year limited/pro-rated fabric and seam warranty.

Quicksilver inflatables are products of Mercury Marine, the world's largest boat engine manufacturer. Sister boat brands include Bayliner, Boston Whaler and Sea Ray, all from the world's largest pleasure boat builder. With a heritage such as this, it's natural that Quicksilver stands behind every boat that it sells.



From short trips to on-water adventures, you can always rely on Quicksilver® Inflatables to provide a variety of boating choices. Made with heavy-duty fabric for durability, the Quicksilver Series is built for long life. And with four boat models to choose from—Roll-Up, Sport, AirDeck™, and Heavy-Duty—you're sure to find a boat to fit your needs.

## THE QUICKSILVER SERIES

### THE ORIGINAL AIR ON WATER.

**Roll-Up 200 and 240 models:** These economical two-person dinghies are perfect for quick ship-to-shore trips. Constructed with slatted floorboards, Roll-Up models set up fast and compact easily for storage in your boat, car or RV. Great for short trips, built for the long haul.

**Sport 240, 270, 310, and 340 models:** From basic transport to coastline exploration, these traditionally styled inflatables carry your family and cargo with ease. The all-purpose Sport models feature wooden floors and combine

easy storage and portability with the value you'd expect from a leader in inflatable boats.

**AirDeck 240, 270, 310, and 340 models:** These deluxe tenders feature more interior room, new color styling and lightweight high-pressure inflatable floors—about 25 percent less weight than comparable wood-floor models. When you're in a lightweight AirDeck, the only thing heavy is the fun.



With a fresh new color for 2001, the AirDeck models are still as lightweight as ever.

**Heavy-Duty 380 and 430 models:** These workhorses of the water were created to withstand the challenging demands of scuba diving and rescue teams. The models feature strategic areas of double-layer, reinforced fabric to prevent chafing and withstand abrasions. Heavy-Duty models also include internal stainless steel D-rings to secure passenger gear and seven external carrying handles for convenient transport and launching. Built with highly visible "Mercury Red" fabric, these utility boats can't be overlooked on the water.



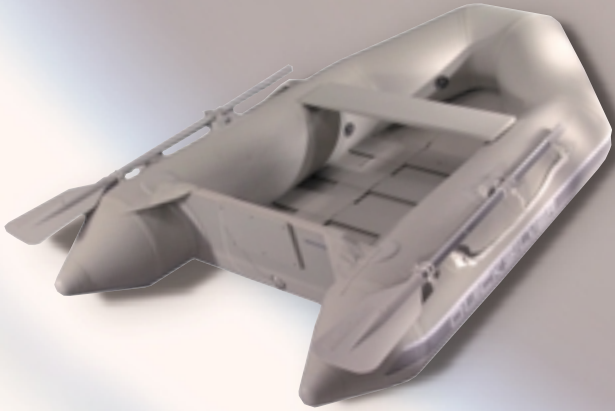
Bright and easy to see, these large, heavy-duty inflatables are ready for adventure.

**A BRAND NEW LOOK FOR 2001.**



# THE QUICKSILVER® SERIES-MODEL HIGHLIGHTS

BUILT FOR USE. NO MATTER HOW YOU USE THEM.



## ROLL-UP 200 & 240 MODELS

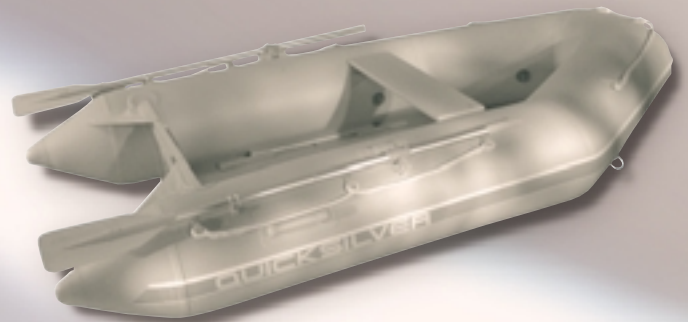
*Perhaps the easiest inflatables to set up and store, Roll-Ups are durable and perfect for shorter trips.*

- Economical two-person dinghies
- Slatted floorboards
- Compact and portable

## SPORT 240, 270, 310, & 340 MODELS

*From a tender to a fun family watercraft, these boats sport lots of space for people and cargo.*

- Traditional, all-purpose boats
- Wooden floorboards
- Store and transport easily



## AIRDECK™ 240, 270, 310, & 340 MODELS

*With new styling and color, the 2001 AirDeck models are bringing a whole new look to Quicksilver Inflatables.*



- Deluxe tenders
- Lightweight high-pressure inflatable floors (about 25 percent less weight than comparable wood-floor models)
- More interior room

## HEAVY-DUTY 380 & 430 MODELS

*The new workhorses for the water, the Heavy-Duty models are ideal for applications where a little more strength and space are required.*

- Perfect for scuba diving and rescue teams
- Strategic areas of double-layer, reinforced fabric to prevent chafing and abrasions
- Heavy-duty aluminum-framed floorboards for extra strength
- Internal stainless steel D-rings to secure extra gear
- Seven external handles for transport and launching





## **QUICKSILVER SERIES FEATURES**

### **BUOYANCY TUBE**

- HEAVY-DUTY (1100 DECITEX) PVC FABRIC WITH TIGHT-WEAVE NONSTRETCH POLYESTER CORE
- LIFTING HANDLES \*
- HALKEY-ROBERTS AIR VALVES \*
- FRONT D-RING WITH INTEGRAL LIFTING HANDLE \*\*
- SEPARATE INTERNAL AIR CHAMBERS
- COLOR-COORDINATED, DURABLE RUBSTRAKE
- STAINLESS STEEL TOWING RINGS

### **HULL**

- INFLATABLE KEEL (EXCEPT ROLL-UP MODELS)
- HEAVY-DUTY MARINE-GRADE PLYWOOD TRANSOM
- CAST-ALUMINUM ENGINE BRACKET
- ONE-WAY DRAIN VALVE WITH PLUG

### **STANDARD EQUIPMENT**

- TWO ALUMINUM OARS OR PADDLES
- MARINE-GRADE PLYWOOD BENCH SEAT
- ELASTIC OAR RETAINING STRAPS
- PINNED OARLOCKS (EXCEPT HEAVY-DUTY MODELS)
- HIGH-VELOCITY AIR PUMP
- REPAIR KIT IN WATERPROOF CONTAINER
- CARRYING BAG

\* EXCEPT 200 AND 240 MODELS

\*\* EXCEPT 200 MODEL

# THE RHINO™ SERIES-MODEL HIGHLIGHTS

COMBINING SPORTINESS, SAFETY AND FAMILY FUN.



## RHINO RIDER™ MODEL

*With the sportiness of a personal watercraft and the stability of an inflatable, the Rhino Rider is a great way to have fun!*

- Integrated center-console
- Saddle-style padded vinyl seat
- Windshield and two side-view mirrors
- Remote-start/panel-mount remote control
- Voltmeter and tachometer
- Two 12 litre gas tanks with fuel lines
- Aluminum paddle
- Battery case

## RHINO SERIES FEATURES

### BUOYANCY TUBE

- SAME AS QUICKSILVER® SERIES FEATURES FROM PAGE NINE
- DETACHABLE FOR EASY REPAIR OR REPLACEMENT

### HULL

- ROTATIONALLY MOLDED POLYETHYLENE HULL
- STAINLESS STEEL TOWING EYE AND ENGINE BRACKET
- FOUR BUILT-IN STAINLESS STEEL DAVIT LIFTING RINGS
- SELF-BAILING SCUPPER WELL
- SEMI-"V" HULL DESIGN

## RHINO RIB II MODEL

*Combining the strength of a rigid hull with the added buoyancy of an inflatable, the Rhino RIB II is the ideal boat for adventurous families.*

- The perfect tender with a rugged side
- Four-person capacity with cargo up to 475 kg



## QUICKSILVER INFLATABLES GENERAL SPECIFICATIONS

MODEL	PART NUMBER	BAGGED DIMENSIONS – CM	MAX LOAD – KG	MAX HP	MAX ENGINE WEIGHT – KG	MAX PERSONS	AIR CHAMBERS	DIMENSIONS				
								a	b	c	d	
QUICKSILVER SERIES	200 Roll-Up	AA200RU1N	99 x 56 x 38	230	4	25	2	2	200 cm	130 cm	34 cm	26 kg
	240 Roll-Up	AA240RU1N	99 x 56 x 38	315	5	25	3	2	240 cm	134 cm	36 cm	29 kg
	240 Sport	AA240QS1N	102 x 56 x 46	390	6	25	3	3+ keel	240 cm	152 cm	40 cm	35 kg
	270 Sport	AA270QS1N	102 x 56 x 46	450	10	40	3.5	3+ keel	270 cm	152 cm	40 cm	42 kg
	310 Sport	AA310QS1N	102 x 56 x 46	520	15	40	4	3+ keel	310 cm	152 cm	40 cm	50 kg
	340 Sport	AA340QS1N	102 x 56 x 46	570	15	50	5	3+ keel	340 cm	152 cm	40 cm	56 kg
	240 AirDeck™	AA240EA1N	102 x 56 x 46	480	6	25	3	3+ keel + floor	240 cm	152 cm	40 cm	31 kg
	270 AirDeck	AA270EA1N	102 x 56 x 46	545	10	40	3.5	3+ keel + floor	270 cm	152 cm	40 cm	37 kg
	310 AirDeck	AA310EA1N	102 x 56 x 46	635	15	40	4	3+ keel + floor	310 cm	152 cm	40 cm	39 kg
	340 AirDeck	AA340EA1N	102 x 56 x 46	705	15	50	5	3+ keel + floor	340 cm	152 cm	40 cm	41 kg
	380 Heavy-Duty	AA380HD1N	132 x 71 x 28	760	25	60	6	3+ keel	380 cm	172 cm	44 cm	75 kg
	430 Heavy-Duty	AA430HD1N	135 x 74 x 32	980	25	60	8	4+ keel	430 cm	186 cm	47 cm	87 kg
RHINO SERIES	Rhino Rider	AA305RR1N	N/A	475	25	60	2	3	305 cm	170 cm	40 cm	130 kg
	Rhino RIB II	AA306QR1N	N/A	475	15	60	4	3	305 cm	170 cm	40 cm	75 kg

**NOTE:**

Due to our constant efforts to offer the finest products available, Quicksilver Inflatables reserves the right to change specifications without notice.

**WARRANTY:**

Mercury Marine backs every 2001 Quicksilver Inflatable with a full five-year prorated limited warranty on fabric and air holding seams, and a one-year warranty on all other parts, accessories and rigid hulls.



# MERCURY INFLATABLES-ACCESSORIES

FROM BOW TO STERN, WE'VE GOT YOU COVERED.

## STORAGE & SEATING



### BOW DODGER/BAG KIT

Part No. 62-808646A 1  
Water-repellent, dark blue Cordura® nylon bag closes with a noncorrosive nylon zipper and hangs under the dodger. Easy to attach.



### UNDER-SEAT STORAGE BAG

Part No. 62-808647T  
Fits all Mercury Inflatables except 200, 230 and 240 models. Handsome, color-coordinated storage bag of water-repellent, dark blue Cordura nylon. Durable construction for long life.



### ADJUSTABLE STORAGE SEAT WITH CUSHION

Part No. 62-809541A 1  
The padded storage seat easily adjusts for use on 230 to 340 models. Easy to install and remove.  
Measures 25 cm (h) x 46 cm (d) x 69 cm to 84 cm (w).



### INFLATABLE THWART SEAT

Quicksilver® Series Models	Part No.
Roll-Up, Sport, AirDeck™ 230 to 260	62-811816 1
Sport, AirDeck 270 to 340	62-811904 1
Heavy-Duty 380	62-811905T 1

This gray inflatable thwart seat will fit most Quicksilver Series models, except the Heavy-Duty 430. Order appropriate size.



### INFLATABLE BENCH SEAT

Part No. 62-809111 1  
Inflatable bench seat with back. Gray color. Fits Quicksilver Series 270, 300, 310, 330, and 340 Inflatables.

### BENCH SEAT-WHITE VINYL WITH ATTACHING HARDWARE

Part No. 62-827658A 1  
66 cm wide fold-back cushion seat with aluminum base and attaching hardware. Fits Quicksilver 270 and larger Sport and Heavy-Duty models.



### WHITE VINYL SEAT CUSHION

Length	Part No.	Boat Size
76 cm	62-809773	230,240 and 260
86 cm	62-809773 1	270-340
102 cm	62-809773 2	380
112 cm	62-809773 3	430

White vinyl, foam-filled cushion fits rowing seat. Six snaps included for attaching.

## AIR PUMPS



### BRAVO 220/800

### AUTOMATIC INFLATOR/DEFLATOR

Part No. 62-809649  
Features an automatic shutoff when pressure reaches 200 mb, with manual override for additional pressure if needed.



### BRAVO 12 AUTOMATIC INFLATOR/DEFLATOR

Part No. 62-803905  
Works off your car's battery to provide up to 300 mb pressure. Auto shutoff prevents over-pressure. Supplied complete with universal adapters including valve and battery connectors.

### BRAVO 6 DOUBLE-ACTION AIR PUMP

Part No. 62-809631T

This easy-to-use, double-action hand pump is much faster than a standard foot pump. Use either single-action (pumps when pushing) or double-action (pumps when pushing and pulling).



### HALKEY-ROBERTS VALVE FILL ADAPTER

Hose Diameter	Part No.
19 mm (3/4")	62-809685
14 mm (5/8")	62-809685 1

Fits old-style valve.

Hose Diameter	Part No.
19 mm (3/4")	62-809685 2

Fits new-style valve.



## COVERS

### BOAT COVER

Inflatable Model	Part No.
200, 230, 240	62-823442 1
260, 270	62-811350
300, 310, 330	62-811351
340	62-880860
380	62-811837
430	62-809172

Rip-stop nylon with UV inhibitors and water-repellent ZEPPEL® finish protects your inflatable from sun, rain and debris. Also fits over attached engine.

## AIRDECK FLOORS



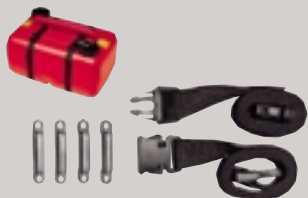
### AIRDECK FLOORS AND THRUST BOARDS

Add the benefits of an AirDeck to an existing Quicksilver Series Inflatable. AirDeck as a replacement floor is available for models 230 (for 1996 models and later)–340.

When an AirDeck is ordered as an accessory to replace wooden floorboards in an existing boat, two additional items must be purchased: 1.) a Double-Action Air Pump and 2.) a Thrust Board. The Thrust Board is placed under the floor to prevent the inflatable keel from pushing up under the floor.

Quicksilver Inflatable Model	AirDeck Floor Part No.	Thrust Board Part No.
230	62-852870A 1	62-852874 3
270	62-852871A 1	62-852875 3
300	62-852872A 1	62-852875 3
330	62-852873A 1	62-852875 3
330 Euro	62-803928A 1	62-852875 3

## FUEL TANK



### FUEL TANK HOLD-DOWN KIT

Part No. 62-809610  
Made with polypropylene strapping for superior strength and appearance. Quick-release buckles simplify replacement of container.

## ENGINE



### SPRAY DEFLECTOR

Part No. 62-809728A 1  
Spray deflector helps prevent engine spray from entering boat. Easy to install.



### ATTWOOD COMBINATION BOW LIGHT WITH ATTACHMENT BASE FOR INFLATABLES

Part No. 67-808766  
Battery-operated bow light designed for inflatables or other surfaces where screws cannot be used.

## TRAILERING



### EASYLIFT MOTORTOTE

Part No. 62-809630  
Provides a removable, secure handle for raising and lowering an outboard motor. Can be left in place permanently. Fits outboard motors up to 15 hp.



### WELLINGTON® PURITAN BOAT TRAILER TIE-DOWN

Part No. 67-850109  
3,05 m long 5 cm wide webbing with the strength, but not the stretch, of nylon. Helps prevent strap loosening while trailering.



### HYDROFOIL STABILIZER KIT

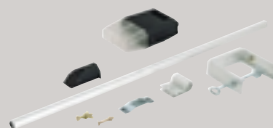
Part No. 62-808657A 1  
For Mercury® or Mariner® 6 to 25 hp engines. Designed to enhance performance—quicker planing, better acceleration.



### DINGHY DOLLY LAUNCHING WHEELS

Part No. 62-808606A 1  
For all Quicksilver series models. Wheels roll easily over firm surfaces and tuck out of the way once the boat is in water.

## LIGHTING



### ATTWOOD® CLAMP-ON STERN LIGHT

Part No. 67-808768  
This 61 cm high all-around light is designed for inflatables and other small craft that do not have permanently mounted navigation lights.



### RAFT RUNNER LAUNCHING WHEELS

Part No. 62-808659A 1  
For all models except Rhino™ Series. Wheels roll easily over firm surfaces and tuck out of the way once boat is in water. Will not rust, corrode or deteriorate.

## REPAIR ACCESSORIES



### BOAT HANDLES

- Part No. (a) 62-811337 1 (gray)  
 (b) 62-811337 (black)  
 (c) 62-859007 (gray)

Additional handles make lifting easier. Mount them anywhere on the boat for convenient handholds.

New model handle (c) doubles as a cleat.



### COMBINATION D-RING AND LIFTING HANDLE

Part No. 809777 1

Backed by rugged 1100 decitex denier fabric.

Ideal for any inflatable boat.



### STAINLESS STEEL RINGS

- Part No. 62-811310 (small, black)  
 62-811309 (large, black)  
 62-811309 1 (large, gray)

These stainless steel rings can be added to inflatables for gas tank tie-downs, lifting rings and securing gear.



### MOLDED ROPE HOLDER

- Part No. 62-811813 (black)  
 62-811813 1 (gray)

Backed by rugged 1100 decitex denier fabric.

Ideal for any inflatable boat.



### SEAT WEBBING/FABRIC

- | Part No.    | Web/Fabric    |
|-------------|---------------|
| 62-818701 2 | (gray/silver) |
| 62-818701 3 | (gray/gray)   |
| 62-818701 4 | (gray/white)  |
| 62-818701 5 | (black/red)   |

Used to attach wooden seats to tubes (two required).

### M.E.K. PATCHING SOLVENT AND CLEANER

Part No. 92-818702

Used to clean inflatable tubes prior to using 2-part glue.

### 2-PART GLUE

- | Size   | Part No.     |
|--------|--------------|
| 118 ml | 92-818651A 3 |
| 236 ml | 92-818651A 4 |
| 473 ml | 92-818651A 1 |
| 946 ml | 92-818651A 2 |

Used to attach handles and larger accessories to inflatable boat tubes.

For use on PVC and Hypalon fabric.

### 1-PART PVC GLUE

Part No. 92-808648

Used for small repairs and to attach small accessories.

### PVC REPAIR KIT

Part No. 92-811314-2

Contains two gray fabric patches, and one tube of cement in a waterproof plastic canister.



### SEAMGRIP™ 1 OZ TUBE

Part No. 92-809628

Excellent for minor seam or small puncture repairs. Seals and repairs in one application, dries overnight.



### AQUASEAL® 1 OZ TUBE

Part No. 92-809626

Thicker than SeamGrip. Repairs small tears and cuts in inflatable boat fabrics such as PVC, Hypalon and more. Dries overnight.



### SEAMGRIP COMBO PACK

Part No. 92-809629

Seams seal in two hours using the combination of SeamGrip and Seam Excel (tack-free in 15 minutes for fast repairs).



### AQUASEAL COMBO PACK

Part No. 92-809627

The combination of AquaSeal and Cotel-240 means repairs will be dry in two hours (tack-free in 15 minutes).





## STEERING



### PEDESTAL ROTARY STEERING KIT

Cable Length	Part No.
1,8 m (6')	62-827659A 6
2,1 m (7')	62-827659A 7
2,4 m (8')	62-827659A 8
2,7 m (9')	62-827659A 9
3,0 m (10')	62-827659A10
3,4 m(11')	62-827659A11
3,7 m (12')	62-827659A12

This floor-mounted pedestal steering unit is made of rugged stainless steel tube construction. Kit includes pedestal frame, 33 cm steering wheel, bezel, rotary helm, steering cable, and attaching hardware (four T-nuts, bolts and washers). Does not include control box, shift and throttle cables or attaching kits for the engine.

### PEDESTAL STEERING MOUNT WITH ATTACHING HARDWARE

Part No. 62-827659A 1

This floor-mounted pedestal steering unit is made of rugged stainless steel tube construction. Kit includes pedestal frame, 33 cm steering wheel, bezel, rotary helm, steering cable, and attaching hardware (four T-nuts, bolts and washers).

### STEERING WHEEL-33 CM

Part No. 62-827667

Soft-grip polyurethane steering wheel.



### PEDESTAL

Cable Length	Part No.
1,8 m (6')	62-827640A 6
2,1 m (7')	62-827640A 7
2,4 m (8')	62-827640A 8
2,7 m (9')	62-827640A 9
3,0 m (10')	62-827640A10
3,4 m(11')	62-827640A11
3,7 m (12')	62-827640A12

This adjustable-width, aluminum tube crossbar steering unit attaches to the lacing cuffs on top of the tube. Includes crossbar frame, 33 cm steering wheel, bezel, rack helm, steering cable, and attaching hardware (four thumb screws, wing nuts and two backing plates). Does not include control box, shift and throttle cables or attaching kits for the engine.

### CROSSBAR STEERING WITH ATTACHING HARDWARE

Part No. 62-827640T

Adjustable width, aluminum tube crossbar frame only. Includes attaching hardware. Order lacing cuffs separately.

### LACING CUFF

Part No. 62-809107 (black)  
62-809107 1 (silver)

46 cm lacing cuff for use with crossbar steering (two required).

AquaSeal is a registered trademark and SeamGrip is a trademark of McNett Corporation. Attwood is a registered trademark of Attwood Corporation. Cordura, Hypalon and ZEPEL are registered trademarks of E.I. du Pont de Nemours and Company. Wellington is a registered trademark of Leisure Products, Inc. All other trademarks belong to the Brunswick Corporation. Quicksilver Inflatables are products of Mercury Marine.

**REMEMBER—LIFE VESTS FLOAT. YOU DON'T.  
ALWAYS USE YOUR ENGINE'S SAFETY STOP LANYARD.**

For more information on our full line of products,  
visit our Website at [www.marinepower.com](http://www.marinepower.com)

**QUICKSILVER®**



All Quicksilver foldable boats are ISO 9002 accredited.

VISIT OUR WEB SITE: [www.marinepower.com](http://www.marinepower.com)

© M.P.E. 2000 PPH GB PRINTED IN BELGIUM 90-822489-01

Mercury Marine continuously explores means to improve the products its designs, manufactures and distributes. Changes to the specifications of its engines, boats and accessories are ongoing. Every effort is made to produce sales and service literature which is current. This brochure should not be regarded as a precise guide to the latest specifications. This brochure is also not an offer for sales of any particular engine, boat, or accessories. Distributors and dealers are not agents of Mercury Marine and they have no authority to bind Mercury Marine by any express undertaking or representation, including but not limited to representations of a product, sales, applications, or service nature.